

KONICA MINOLTA



bizhub 42/36: B&W partners that will power up your productivity.



A TOTAL DOCUMENT SOLUTION REQUIRES A RANGE OF OUTPUT DEVICES ALL WORKING TOGETHER – AND KONICA MINOLTA'S BIZHUB 42 AND 36 ARE VALUABLE ADDITIONS TO YOUR MFP FLEET. WITH ONE OF THE LOWEST COST-PER-PAGE RATES IN THEIR CLASS, THEY GIVE YOU HIGH-SPEED MONOCHROME PRINT/COPY OUTPUT AT 42 OR 36 PPM. COLOR SCANNING ADDS FAST, FLEXIBLE ELECTRONIC DISTRIBUTION FOR SAVING AND SHARING INFORMATION. A SUPER G3 FAX OPTION PROVIDES ALL-IN-ONE PRODUCTIVITY. AND THE INTERNAL FINISHING OPTION LETS YOU STAPLE AND SORT DOCUMENTS AUTOMATICALLY AS YOU PRINT. SLEEK STYLING, SIMPLE OPERATION, ENHANCED SECURITY AND ENVIRONMENTAL PROTECTION – YOU'LL HAVE THE FEATURES AND FUNCTIONS YOUR WORKFLOW DEMANDS, AT A COST THAT BENEFITS YOUR BOTTOM LINE.

**COUNT
ON**
KONICAMINOLTA

Copy and print to both letter and legal size paper. Duplexing is standard and the optional FS-529 Inner Finisher lets you staple up to 50 pages and sort documents automatically.



The power and performance your business deserves.

The bizhub 42 and 36 provide fast, high-resolution monochrome prints and copies of B&W or color originals, speeding your work and saving you money. You can print and copy on paper sizes up to 8-1/2" x 11" letter and 8-1/2" x 14" legal, dimensions that suit the needs of most office documents. The addition of a dual-cassette option raises maximum paper capacity to 2,150 sheets for long print/copy runs without reloading. Standard duplexing saves both time and paper by performing two-sided printing automatically.

An internal finishing option gives your bizhub 42 and 36 the power to staple up to 50 pages and sort documents automatically – producing reports, presentations, human resource materials, internal memos and other corporate communications without tedious hand-finishing.

Konica Minolta's exclusive Emperon® print system is built in, with PCL6 and PostScript 3 emulation and native XPS functionality to fit both Windows and Mac environments right out of the box. The Emperon system offers intuitive functionality, like other bizhub MFPs (Multifunctional Printers) – and Universal Printer Driver simplifies print management and makes operation easy even for first-time users.

In addition to Emperon printing, the bizhub 42 and 36 incorporate another Konica Minolta exclusive: Simitri® HD toner, for high-resolution text and graphics that improve your image. Using polymerized design to increase fine detail and biomass plant-based materials to reduce environmental impact, Simitri HD toner is also recycled 100% by the bizhub 42/36. All untransferred toner is recirculated by a toner recycling mechanism and re-sent to the developing unit, so no toner waste is generated.

bizhub 42/36: a perfect fit for your MFPs.

WHETHER YOU'RE A LARGE CORPORATION WITH A FLEET OF MULTIFUNCTION PRINTERS OR A GROWING BUSINESS WHOSE LEGACY EQUIPMENT CAN'T KEEP PACE, THESE A4 PRINTER/COPERS FROM KONICA MINOLTA WILL HELP SPEED YOUR DOCUMENT WORKFLOW AND REDUCE YOUR COSTS. THE BIZHUB 42 AND 36 ARE DESIGNED TO INTEGRATE WITH YOUR MFP NETWORK, REPLACE UNDERUTILIZED DESKTOP PRINTERS, AND REDUCE IT MANAGEMENT NEEDS BY CONSOLIDATING ADMINISTRATIVE FUNCTIONS – A WINNING COMBINATION FOR HIGHER PRODUCTIVITY.



The bizhub 42 and 36 are designed to easily share data and documents and integrate seamlessly with your MFP fleet – eliminating the need for other desktop peripherals, streamlining your workflow and saving you money.



Scan, save and share at high speed – and in color.

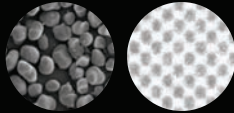
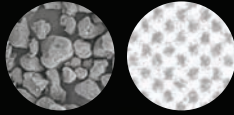
Cost-efficient workflow means producing only the prints and copies you need, taking advantage of electronic distribution to move data through your system faster. With built-in color scanning, the bizhub 42 and 36 make it easier to share documents via Scan to Email, USB, FTP, User-Box and SMB functionality for distributing files anywhere your business demands – including remote locations.

A high-speed Super G3 fax option puts total input/output flexibility at your fingertips, with both Internet faxing and PC-faxing to send data to destination quickly and easily. A large 4.3" color LCD panel makes user-friendly menus more visible – and tilts to accommodate the needs of every user for Section 508 compliance.

Konica Minolta leads the industry in protecting sensitive information, and the bizhub 42 and 36 are no exceptions – meeting ISO 15408 Common Criteria® classification with enhanced security features. You can also add state-of-the-art security options, including an HID Proximity Card Authentication Kit for secure access to your bizhub MFP.

And Konica Minolta's PageScope® suite of applications makes your bizhub 42 and 36 even more powerful. A productivity package that combines modular, interlocking tools to manage print output from multiple MFPs with "point and print" simplicity, PageScope Enterprise Suite enables you to provide password-protected log-in at each MFP, track MFP activity based on user log-in, and much more – creating network efficiency and overall system savings to benefit your bottom line.

PULVERIZED TONER



Simitri HD polymerized toner with Biomass, Konica Minolta's unique formulation that uses smaller, more uniform toner particles that improve fine detail, and provide superior halftones and more legible text.



The HID Card Kit automatically grants the user access, eliminating the need to remember and enter a password every time a user wants to scan or output a document.



Operation is simple, with a convenient 4.3" LCD touch-screen interface and intuitive menus. The USB port supports both printing from and saving to a USB flash drive.



Saving the planet while saving you money.

For all their power and productivity, the bizhub 42 and 36 are remarkably sensitive to the environment. Their high quality B&W printing is more cost-efficient. Low-noise design creates a quieter workplace. Low power consumption and reduced standby power in sleep mode maximize your energy savings.

In fact, Konica Minolta leads the industry in environmental initiatives – like our Clean Planet program, providing cost-free recycling for all your Konica Minolta consumables including toner cartridges and bottles, imaging units, developer and drums.

In manufacturing, we reduce environmental impact across the entire lifecycle of our products, consistently cutting emissions and minimizing pollutants. And our Eco Vision 2050 program is committed to reducing CO₂ emissions by 80% over 2005 levels – eliminating greenhouse gases that may contribute to global warming. These and other innovations have earned Konica Minolta a place in the 2011 "Global 100" list of most sustainable corporations by Corporate Knights, the magazine for clean capitalism.

For all your document needs, count on Konica Minolta.

Konica Minolta Business Solutions U.S.A., Inc., is a leader in advanced document management technologies and managed IT services for desktop to print shop. With over 37,000 worldwide employees, cutting-edge research programs in optical and digital technology, and the industry's most complete line of document imaging solutions in both color and B&W, we're proud of our record of achievement. For the fourth straight year, Konica Minolta has been recognized as the #1 Brand for Customer Loyalty in the MFP Office Copier Market by Brand Keys – so as long as you count on Konica Minolta, you've made the right decision.

COUNT ON KONICA MINOLTA



ECO-VISION 2050 is Konica Minolta's commitment to protect the environment – saving energy, preserving resources, promoting recycling and reducing CO₂ emissions to help sustain the environment for generations to come. Please visit our website to learn some more about our environmental initiatives and our exclusive **Clean Planet Program**.

www.cleanplanetus.com



bizhub 42/36

bizhub 42



bizhub 36



monochrome printer/copier/scanner/fax

SPECIFICATIONS

Type	Printer / Copier / Full-Color Scanner with stationary platen		
Toner System / Print Method	Polymerized Toner / Electrophotographic Laser		
Print / Copy Speed (Letter, portrait)	B&W: 42 ppm		B&W: 36 ppm
Monthly Duty Cycle (pages)	60,000		48,000

COPY

Warm-up Time / First Copy Time	Less than 45 seconds / Less than 8.8 seconds		
Copy Resolution / Copy Quantity	4800dpi (equivalent) x 600dpi / 1-999		
Copy Features	APS/AMS, Auto Duplex, Auto Tray Switching, Background Removal (9 steps), Contrast (-4 to +4), Sharpness (-3 to +3), Copy Modes, (Simplex/Duplex), Density (9 Steps), Binding Position (Original, Output), Electronic Sorting, ID Copy (Card Shot), Interrupt, Job Concurrency, Job List, Job Reserve, Mixed Originals (Letter/Legal only), Multi-Job, Page Margin, Program/Recall Jobs, Proof Copy, Quality (Text, Text/Photo, Photo), Separate Scan, Sort, Zoom, 2-in-1, 4-in-1		

PRINT - Emperon Print System

Processor / Memory / Hard Disk Drive	MV78100 800MHz / 1.5GB RAM / 320GB HDD (shared print, copy, scan and fax memory)		
Print Resolution / Grayscale Gradations	4800dpi (equivalent) x 600dpi / 256 shades		
Interface	10 Base-T/100 Base-TX/1000 Base-T, Hi-speed USB 2.0, USB 2.0 Host Port		
Page Description Language / Fonts	PostScript 3 (3016), PCL6 (XL 3.0), PCL5e/c, XPS (1.0), PDF Direct Printing (Version 1.7), JPEG/TIFF Direct Print / PCL: 80 fonts, PS3 Emulation: 137 fonts		
Operating System Compatibility	PCL6: Windows XP (x32, x64), Windows Server 2003 (x32, x64), Windows Vista (x32, x64), Windows Server 2008 (x32, x64), Windows Server 2008 R2 (x32, x64), Windows 7 (x32, x64); PS3: Windows XP (x32, x64), Windows Server 2003 (x32, x64), Windows Vista (x32, x64), Windows Server 2008 (x32, x64), Windows Server 2008 R2 (x32, x64), Windows 7 (x32, x64); Mac: OS X 10.2.8, 10.3.9, 10.4, 10.5, 10.6, 10.7*, XPS: Windows Vista, Windows Server 2008, Windows Server 2008 R2, Windows 7 (x32, x64); Linux: Red Hat, SUSE; Netware: Netware 4/5/6; Others: SAP, Citrix (XenApp 4.5, 5.0, 6.0)		
Network Protocols	TCP/IP (IPv4/IPv6), IPX/SPX, AppleTalk (EtherTalk), IPP1.1, SNMP, HTTP, HTTPS		
Print Features	Auto Duplex, Booklet Printing, Collate, Direct Print, Economy Printing, Image Overlay/Watermark Function, Job List, My Tab, N-Up Printing, Offset, Poster Mode, PPML, Print from USB, Proof Print, Secure Print, Separator Page, Skip Blank Pages (PCL/XPS only)		

COLOR SCAN

Scan Speed	Color / B&W: 31opm (@300dpi, letter)		
Scan Resolution	150dpi x 150dpi, 200dpi x 200dpi, 300dpi x 300dpi, 600dpi x 600dpi (Network Twain: 150dpi, 300dpi, 600dpi, 1200dpi, 2400dpi, 4800dpi)		
Scan File Formats	TIFF, PDF, Compact PDF, Encrypted PDF, JPEG, XPS		
Scan Features	Scan-to-Email, Scan-to-FTP, Scan-to-SMB, Scan-to-User Box (HDD), Scan-to-USB Memory, Scan-to-WebDAV, WSD Scan		

FAX

Internet Fax	Standard		
<ul style="list-style-type: none"> FK-509 Fax Kit Fax Line / Mode 	Includes Super G3 Fax, IP Address Fax, PC Network Fax Driver		
<ul style="list-style-type: none"> Fax Transmission Speed Fax Features 	PSTN (Public Switch Telephone Network), PBX (Private Branch Exchange), Super G3 (Fax line) Approx. 3 sec (A4, V.34, 33.6kbps, JBIG) Program, Select from address book, Group dial program, Auto redial, Original type (text, text/photo, photo), Density adjustment (manual 9 levels), Background adjustments (manual 9 levels), Sharpness (manual 7 levels), Memory TX, Busy / error redial, Broadcast TX, Timer TX, Confidential TX, Relay TX request, Polling RX, TX Original size setting, Mixed original TX, ECM OFF, V34 OFF TX, Password TX, Memory RX, Memory vicarious execution RX, Password RX, Auto Reduction print, Full size print, TEL/FAX Auto switch, Audio response, Answering Machine Connection, Remote RX, Nighttime Receiving User Box destination setting, Activity report, TX Result Report, Broadcast Result TX Report, Broadcast Result RX Report, Various lists, Long paper original TX/RX, PC-FAX TX/RX, Mistake TX prevention		

PAPER INPUT

Reversing Auto Document Feeder	Capacity: 50 sheets, Paper Size: 5.5" x 8.5" to 8.5" x 14", Paper Weight: 50-128 gsm		
Original Size	Up to 8.5" x 14"		
Tray 2 & 3	Capacity: 500 sheets, Paper Size: 5.5" x 8.5" to 8.5" x 11", Paper Weight: Single-sided: 60-90 gsm		
Bypass Tray	Capacity: 150 sheets, Paper Size: 5.5" x 8.5" to 8.5" x 14", Paper Weight: Single-sided: up to 210 gsm		
<ul style="list-style-type: none"> PC-211 DK-511 	Paper Feed Cassette Capacity: 2 x 500 sheets, Paper Size: 5.5" x 8.5" to 8.5" x 14", Paper Weight: Single-sided: 60-90 gsm		
Paper Capacity (Std./Max.)	Copy Desk - Storage Drawer 1,150 sheets (3-way) / 2,150 sheets (Total w/ options, 5-way)		

PAPER OUTPUT

Standard Output	Inner Output Tray: 250-sheet Capacity		
-----------------	---------------------------------------	--	--

FINISHING

<ul style="list-style-type: none"> FS-529 MK-601 	Inner Finisher: 50-sheet stapling; Output Tray: 300-sheet Capacity Finisher Mounting Kit for FS-529		
--------------------------------------------------------------------------	--------------------------------------------------------------------------------------------------------	--	--

APPLICATION SOFTWARE

Network Utility	PageScope Net Care Device Manager, PageScope Account Manager, PageScope Enterprise Suite Plug-in, PageScope Web Connection, PageScope DirectPrint, PageScope Data Administrator, Print Status Notifier		
Management Tools	bizhub vCare support		

AUTHENTICATION DEVICES

<ul style="list-style-type: none"> AU-201H AU-202H WT-510 	HID Proximity Card Authentication HID iClass Card Reader Working Table to support Authentication Devices		
--------------------------------------------------------------------------------------------	----------------------------------------------------------------------------------------------------------------	--	--

POWER & DIMENSIONS

Power Requirements / Consumption	120V / 60Hz @ 15A (110V) / Less than 1500W (max consumption)		
TEC Value	3.9 kWh		3.6 kWh
Dimensions (W x D x H) / Weight	46.1" x 29.6" x 44.6" / 139 lbs.		

CONSUMABLES

TN-415	Black Toner (Yield: 25K)		
DR-411	Drum (Yield: 120K)		Drum (Yield: 110K)
DV-411	Developer (Yield: 120K)		Developer (Yield: 110K)

● OPTIONAL ● STANDARD

* Not available at the time of launch



KONICA MINOLTA

KONICA MINOLTA BUSINESS SOLUTIONS U.S.A., INC.
100 Williams Drive
Ramsey, NJ 07446

www.CountOnKonicaMinolta.com
www.kmbs.konicaminolta.us

Konica Minolta Optimized Print Services offers a full suite of device output services and workflow solutions that increase efficiency and control costs. Please contact your authorized Konica Minolta sales representative for details.

© 2012 KONICA MINOLTA BUSINESS SOLUTIONS U.S.A., INC. All rights reserved. Reproduction in whole or in part without written permission is prohibited. Konica Minolta is a registered trademark of KONICA MINOLTA HOLDINGS, INC. bizhub and PageScope are trademarks of KONICA MINOLTA BUSINESS TECHNOLOGIES, INC. All other brands and product names are registered trademarks or trademarks of their respective owners.

COUNT ON KONICA MINOLTA



Item #: 42BR0
1/12