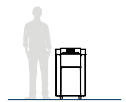


KOBRA DIGITAL-PRO

DIGITAL MEDIA SHREDDER
SMALL FOOTPRINT - HIGH PERFORMANCE



Model: KOBRA DIGITAL-PRO
Article Code: 99.955
EAN Code: 8 026064 999557



Throat width:	6 5/16" x 3 9/16"
Shred size:	5/32" x 19/32" (4 x 15 mm)
Security level ISO/IEC 21964 (DIN 66399):	E-3 T-4 O-3
Shreddable materials:	Solid State Drives (also with metal casings), Smartphones, SIM Cards, Flash Drives, USB devices, IC Chips, Credit cards with chips, PC Boards, CD/DVD/Blu-ray disks.
Throughput*:	SSD: 1.100/h - CD/DVD: 2.000/h
Waste bin capacity:	8.5 gal. Removable waste bin.
Noise level:	55 dB
Voltage:	115 Volt / 60 Hz
Power:	2.7 HP
Dimensions (WxDxH):	25 x 21 x 41 inch
Net weight:	310 lbs

* Theoretical throughput Datasheet n.156 rev.5

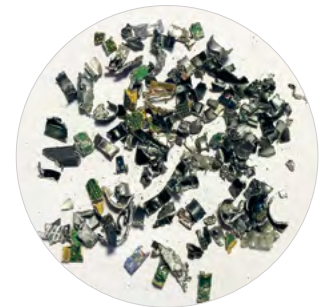


TRADE AGREEMENT ACT (TAA) AND BUY
AMERICAN ACT COMPLIANT.

MAIN FEATURES

KOBRA DIGITAL-PRO is a high-performance and versatile digital media shredder designed for the office environment. It efficiently destroys Solid State Drives (also with metal casings), Smartphones, SIM Cards, Flash Drives, USB Devices, IC Chips, Credit Cards with chips, PC Boards and other digital storage media — combining high level of security, powerful shredding capability with enhanced functionality, convenient and ideal for the office environment.

- **High-level security shredding.**
- **Exclusive shredding technology** utilizing exclusively designed cutting knives manufactured from high grade carbon steel.
- **Small footprint:** designed for the office environment, foot print of 23.5x19 inches makes the Kobra Digital-Pro suitable for any office space.
- Attractive durable **metal cabinet** and heavy duty casters.
- **Shreds SSDs (also with metal casings), smartphones, SIM cards, USB drives, flash memory, IC chips, Credit Cards with chips, PC Boards, CD/DVD/BD.**
- **Powerful high efficiency motor** for reduced operating costs.
24-hour continuous duty. Extremely **low noise level** below 55 dB.
- **Easy-access** with two convenient entry openings through sliding window and self-closing flap.
- **LED indicators:** clearly show the current status of the machine • **LED feed guidance system:** allows the operator to monitor and control the load on the cutting knives during continuous shredding operation.
- **Automatic anti-jamming system:** equipped with intelligent software that automatically handles jams, leaving the operator free of any manual intervention.
- **Automatic Start & Stop**
- **Safety Stop:** machine automatically stops when the door is opened or waste bin is full.



Shreddable materials: Shreds
SSDs (also with metal casing),
smartphones, SIM cards, USB drives,
flash memory, IC chips, Credit Cards
with chips, PC Boards, CD/DVD/BD.



Touch-screen operating panel: controls are activated by simply touching the intuitive control panel with LED indicators.



**"TITAN-COLOSSUS" GEARMOTOR DRIVE
shreds SSDs with metal casings**

The Kobra DIGITAL-PRO is equipped with the **"Titan-Colossus" gearmotor drive specially designed heavy duty cutting knives with unmatched power** to shred large quantities of: SSDs (also with metal casings), smartphones, SIM cards, USB drives, flash memory, IC chips, Credit Cards with chips, PC Boards, CD/DVD/BD.



LOG MANAGEMENT SYSTEM (OPTION): allows to scan and automatically store into a computer barcode serial number of the device being shredded, keeping track of day and hour (barcode reader included).