

KV-S8147 / KV-S8127 Specifications

		KV-S8147	KV-S8127
Scanning Face		Duplex	
Scanning Method		RGB 3 Line Colour CIS (600 dpi)	
Scanning Resolution ^{*1}		100 – 600 dpi (1 dpi step), 1,200 dpi (Interpolated) Optical: 300 dpi / 600 dpi (Automatic switch)	
Scanning Speed ^{*2}	Binary/Colour	Up to 140 ppm	Up to 120 ppm
	A4 or Letter, Landscape, 200/300dpi Simplex Duplex	Up to 280 ipm	Up to 240 ipm
Double feed detection		Ultrasonic (The length of documents that can be detected is 70 mm or more.)	
Image Compression		MH, MMR (Software ICP), JPEG	
Image Control		Automatic Brightness Adjustment, Automatic Image Emphasis, Dynamic Threshold, White Level From Paper, Automatic Separation, Noise Reduction, Auto Preview, Auto Rescan, Multi-color Dropout, Dither, Error Diffusion	
Other Functions		Barcode detection, Length Control, Patch Code Detection (Ttype 2, 3, T), Control Sheet detection, Long Paper, Intelligent Double Feed Detection	
Documents	Width	48 mm – 307 mm [1.9 in. – 12.09 in.]	
	Length	Automatic feeding: 70 mm – 432 mm [2.75 in. – 17 in.] Manual feeding: 70 mm – unlimited [2.75 in. – unlimited] Manual feeding: 110 mm – unlimited [4.33 in. – unlimited]	
Weight ^{*3}	Automatic feeding:	20 g/m ² – 255 g/m ² [5.2 lbs. – 68 lbs.]	
	Manual feeding:	20 g/m ² – 550 g/m ² [5.2 lbs. – 146 lbs.] (Straight path [rear exit]) 20 g/m ² – 255 g/m ² [5.2 lbs. – 68 lbs.] (U-turn path [front exit])	
Feed Tray Capacity		750 sheets [80 g/m ² [21 lb.] A4 High-quality woodfree paper] 500 sheets [80 g/m ² [21 lb.] A3 High-quality woodfree paper]	
Supported Operating System		Windows® XP SP3 [32 bit/64 bit], Windows Vista® SP2 [32 bit/64 bit], Windows® 7 [32 bit/64 bit], Windows 8 [32 bit/64 bit], Windows 8.1 [32 bit/64 bit], Windows 10 [32 bit/64 bit], Windows Server® 2003 SP2 [32 bit/64 bit], Windows Server® 2003 R2 SP2 [32 bit/64 bit], Windows Server® 2008 SP2 [32 bit/64 bit], Windows Server® 2008 R2 SP1 [64 bit], Windows Server® 2012 [64 bit]	
Interface		USB 2.0 / USB 3.0	
External Dimensions (W X D X H)		545 mm x 474 mm x 435 mm [21.46 in. x 18.66 in. x 17.12 in.] *Protruding parts not included	
Weight		44 kg [97 lbs.]	
Power Requirement ^{*4}		AC100 – 120 V, 50/60 Hz, 2.7 A AC100 – 240 V, 50/60 Hz, 2.7 – 1.5 A	
Power Consumption	Maximum [Scanning]	140 W or less	
	Minimum [Ready]	35 W or less	
	Sleep	2.0 W or less	
	Power off	0.5 W or less	
Operating Environment ^{*5}		Temperature: 5 °C – 35 °C [41 °F – 95 °F] Humidity: 20 % – 80 % RH	
Storage Environment		Temperature: -10 °C – 50 °C [14 °F – 122 °F] Humidity: 8 % – 75 % RH	
Accessories		CD-ROM: Device driver, ISIS driver software, TWAIN driver software, User utility, Scan Button Setting Tool, Image Capture Plus with OCR Engine, Operating Manual, Control data sheet (PDF) Quick Installation Guide, Power Cord, USB Cable [2.0 m / USB 3.0], Shading paper, Attachment Guide (R/L)	
Options	Roller exchange kit	KV-SS064 • Feed roller unit [1 piece] • Double feed prevention roller unit [1 piece] • Separation roller unit [1 piece]	
	Roller exchange kit	KV-SS065 • Feed roller [6 sets [12 pieces]] • Double feed prevention roller [6 sets [12 pieces]] • Separation roller [6 sets [12 pieces]] • Double feed prevention roller torque limiter [3 sets [3 pieces]]	
Roller cleaning paper		KV-SS03	
Imprinter Unit		KV-SS014	
Ink cartridge		KV-SS021	
Flatbed Scanner		KV-SS081	

*1 The scanning speed differs depending on the host computer, the operating system, the application, the measuring method, the quantity of data in the image, and the paper type. The scanning speed depends on a measuring method of Panasonic.
*2 When scanning a document larger than A5 size at high resolutions over 600 dpi, the scanning may fail due to insufficient memory.
*3 Use "Thin paper mode" when scanning the document less than 40 g/m² [10.6 lb.].
*4 The power requirement differs depending on the country/area.
*5 About the environmental conditions of Imprinter Unit (KV-SS014), refer to the Installation Manual of Imprinter Unit. When printing in conditions outside of the imprinter unit's operating environment, the printing result may be faded or printing may not occur.

Dimensions



Panasonic

BUSINESS

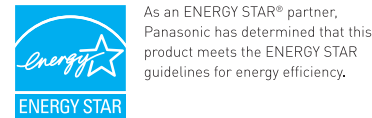
Document Scanner

KV-S8147

KV-S8127

FAST AND RELIABLE

Streamline your scanning process



Trademarks and registered trademarks
 - ENERGY STAR and the ENERGY STAR mark are registered U.S. marks.
 - ISIS is a registered trademark or trademark of EMC Corporation in the United States and other countries.
 - Windows, Windows Vista and Windows Server are either registered trademarks or trademarks of Microsoft Corporation in the United States and/or other countries.
 - All other brand or product names are the property of their respective holders.
 This product is designed to reduce hazardous chemical substances in accordance with the RoHS directive.

- All photographs in this brochure are simulated.
- Weights and dimensions are approximate.
- Specifications are subject to change without notice.
- These products may be subject to export control regulations.

High-Speed, High-Volume, A3 Scanning

- 140 ppm/280 ipm (KV-S8147), 120 ppm/240 ipm (KV-S8127) (A4/Letter, Landscape, 200/300-dpi, Binary/Colour)
- 750-Sheet ADF

Reliable Paper Feed to Keep Work Moving

- Document Protection, Mechanical Deskew*
- Double-Feed Retry*, Movable Exit Tray

*KV-S8147 only.

High Durability, Low Maintenance

- Long-Life Roller, 600,000-Sheet Operation
- Highly Durable Glass Coating



business.panasonic.ca
1-800-635-3587

Panasonic is constantly enhancing product specifications and accessories. Specifications subject to change without notice. Trademarks are property of their respective owners. ©2016 Panasonic Corporation of North America. All rights reserved.

Panasonic

BUSINESS



Raise Work Efficiency with **Faster Scanning**

High-Speed, High-Volume Scanning

A high-speed, high-volume ADF, which was made possible by advances in image processing technology, has increased the efficiency of processing large numbers of documents.

140 ppm/
280 ipm
(KV-S8147)

120 ppm/
240 ipm
(KV-S8127)

ADF
750 sheets
(A4)
(A3 500 sheets)



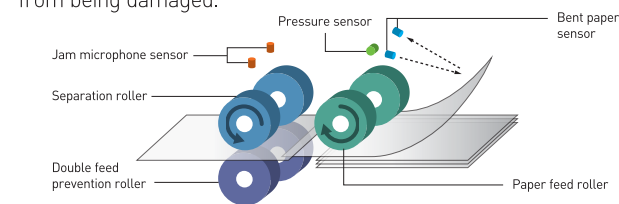
Reliable Paper Feed

ToughFeed



Document Protection

Multiple sensors check the paper feed conditions to automatically optimise the scanning of various documents while preventing them from being damaged.

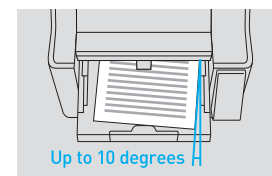
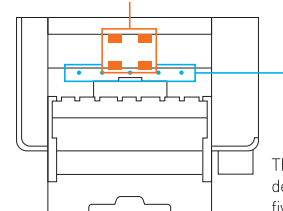


- **Jam microphone sensor** — Scanning is stopped when an abnormal noise is detected during the paper feed.
- **Pressure sensor** — The roller pressure on the document is detected, and the height of the feed tray is adjusted.
- **Bent paper sensor** — The bounce of documents that are bound with staples in all directions is detected, and scanning is stopped.

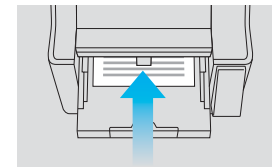
New Mechanical Deskew

The KV-S8147 corrects document skewing up to a maximum of 10 degrees. The sensors have also been increased to five in order to raise the accuracy of detection and de-skewing.

The tilt of the document is controlled by rollers on both sides.



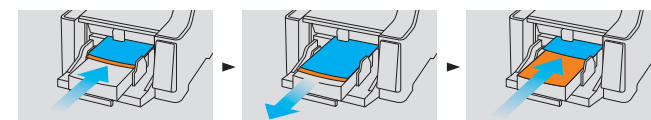
Even if skewed documents enter...



The skew is detected by five sensors
Skewing is reduced mechanically before scanning

Double Feed Retry

If a double feed was detected, the double feed retry function will return the documents to the feed tray automatically, then separate the double fed documents again and scan them.



Double feeding is detected.* Documents are returned to the tray. The double-fed documents are re-fed, separated, and scanned.
* The KV-S8147 has 5 sensors, and the KV-S8127 has 3 sensors for Double Feed Detection.

Double Feed Skip (DFS)

If double feed retry happens three times for the same document, retry will finish and display the error or the Double Feed Skip (DFS) function can be used to resume scanning.

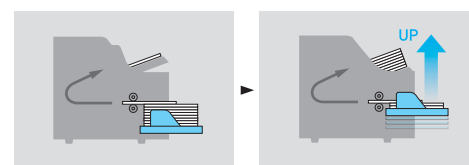


Movable Exit Tray

Movable exit tray and paper ejection control eliminate fluctuations in the paper exit of mixed scanning documents. Moving up and down of the feed/exit tray also shorten the scanning time.

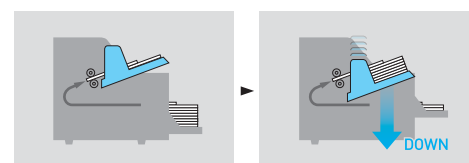
Feed Tray

The feed tray rises quickly and maintains the optimal pressing force.



Exit tray

The exit tray maintains the optimal height from the exit tray to prevent exit fluctuations.



Heavy Duty **Reliability**

High Durability, Low Maintenance

Long-Life Roller

A long life of 600,000 sheets reduces the need for roller replacement. Select from two types of roller exchange kits to match the replacement to the wear conditions.

Roller Exchange Kit

Model No.	KV-SS064	KV-SS065
Contents	Replacement Roller Unit Set <ul style="list-style-type: none"> • Feed roller unit (1 piece) • Double feed prevention roller unit (1 piece) • Separation roller unit (1 piece) 	Set with Roller Rubber and Torque Limiter Only <ul style="list-style-type: none"> *Service visit required • Feed roller [6 sets (12 pieces)] • Double feed prevention roller [6 sets (12 pieces)] • Separation roller [6 sets (12 pieces)] • Double feed prevention roller torque limiter [3 sets (3 pieces)]
Roller Replacement	600,000 sheets	3,600,000 sheets*

* KV-SS065 is a set with parts for six replacements. 1 replacement = 600,000 sheets

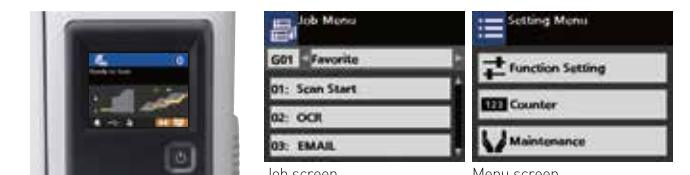
Easy Maintenance

Maintenance of the transport path is easier because the ADF door opens widely. In addition, cleaning mode rotates the conveyor rollers and exit roller to easily clean the entire surface of each roller without rotating the rollers with your fingers.



Full-Colour LCD

An easy-to-see, full-colour LCD enables scanner settings and maintenance without having to use a PC.



Highly Durable Glass Coating

The use of a highly durable glass coating reduces vertical streaking of images due to the effects of paper dust, and decreases the required frequency of maintenance.